

INSTRUMENT APPROACH CHART - ICAO

AERODROME ELEV 51 ft
HEIGHTS RELATED TO
THR RWY 01 - ELEV 32 ft

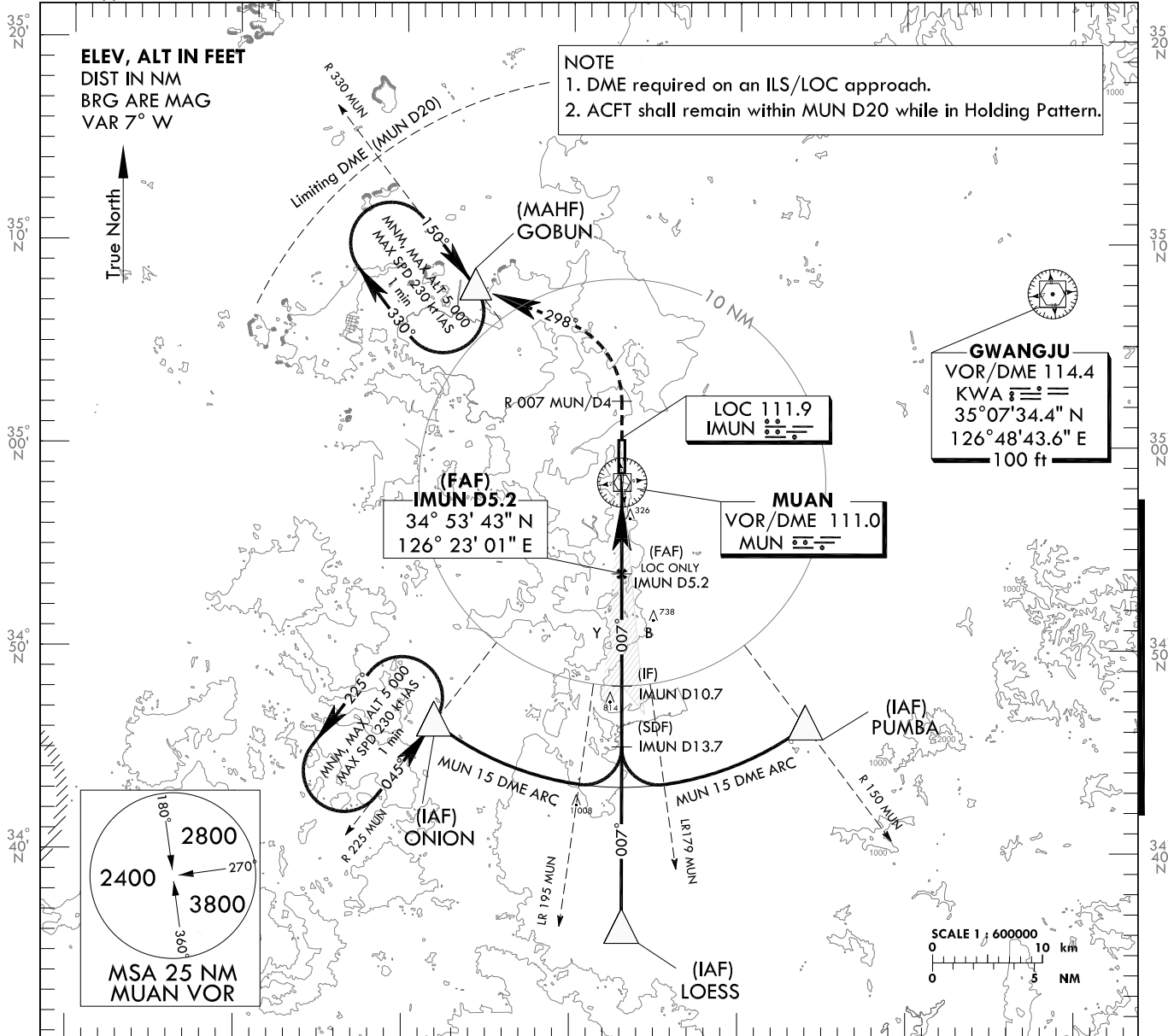
| | |
|-------------|--------|
| GWANGJU APP | 130.0 |
| | 228.9 |
| MUAN TWR | 118.25 |
| | 118.85 |

MUAN/Muan Intl(RKJB)

ILS or LOC Y RWY 01

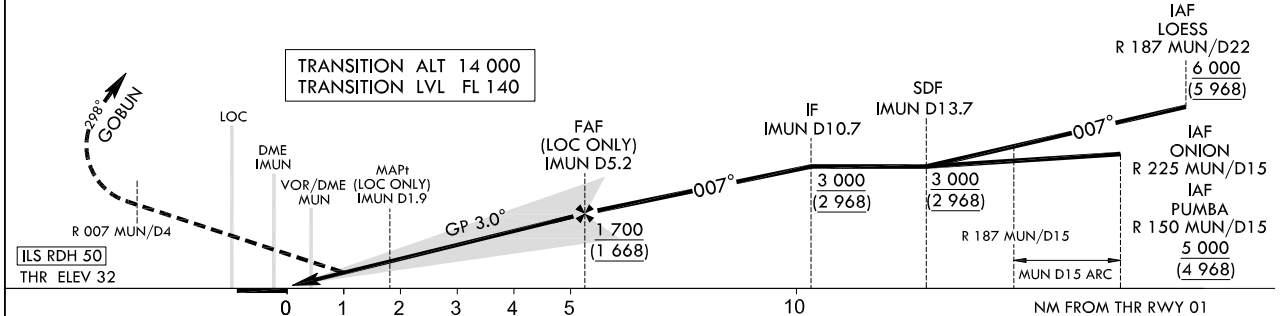
Note : Approach under ICAO Flight Procedure.

126°20' E 126°30' E 126°40' E



| RECOMMENDED PROFILE(LOC ONLY) | DME IMUN | 5 | 4 | 3 | 2 |
|--|----------|------------------|------------------|--------------|--------------|
| Final Approach Gradient 5.31%, 323 ft/NM | ALT(HGT) | 1 645 (1 613) | 1 322 (1 290) | 999 (967) | 660 (628) |

MISSED APPROACH
Climb on R 007 MUN/D4, then turn left HDG 298° to GOBUN and Hold at 5 000 ft.



| CATEGORY | DA(DH)/MDA(MDH) | A | B | C | D | Knots | 60 | 90 | 120 | 150 | 180 | |
|----------|-----------------|----------------------|----------------------|---------|---------|-------|--|----|-----|-----|-----|-----------------|
| | | RVR 550 m, VIS 800 m | 1 200 m | 2 600 m | 3 300 m | | | | | | | Rate of descent |
| STA | CAT-I | FULL | RVR 550 m, VIS 800 m | | | | * Timing Not authorized for defining MAPt. * Circling Not authorized. | | | | | |
| | | ALS INOP | | | | | | | | | | |
| | LOC | FULL | | | | | | | | | | |
| | | ALS INOP | | | | | | | | | | |

Change : Information of obstacle height.

MUAN/Muan Intl(RKJB)
ILS or LOC Y RWY 01

AERONAUTICAL DATA TABULATION

| ILS/LOC Approach to RWY 01 form ONION, LOESS or PUMBA | | |
|---|--------------------------|--------------------------------|
| Fix/point | | Coordinates |
| ONION(IAF) | R 225 MUN /15.00 NM MUN | 34°46'19.7" N 126°11'50.8" E |
| LOESS(IAF) | R 187 MUN /22.00 NM MUN | 34°36'10.5" N 126°23'06.3" E |
| PUMBA(IAF) | R 150 MUN /15.00 NM MUN | 34°46'14.4" N 126°34'00.9" E |
| D13.7 IMUN(SDF) | BRG 7.10°/13.67 NM IMUN | 34°45' 11.5" N 126°23'04.1" E |
| D10.7 IMUN(IF) | BRG 7.10°/10.69 NM IMUN | 34°48' 10.9" N 126°23'03.3" E |
| D5.2 IMUN(FAP) | BRG 7.10°/5.17 NM IMUN | 34°53'42.6" N 126°23'00.5" E |
| D1.9 IMUN(MAP† LOC ONLY) | BRG 7.10°/1.90 NM IMUN | 34°56'59.1" N 126°22'59.2" E |
| MUN VOR/DME | | 34°58'12.7" N 126°23'00.0" E |
| THR RWY01 | | 34°58'43.64" N 126°22'58.45" E |
| IMUN DME | | 34°58'53.2" N 126°22'53.8" E |
| IMUN LOC | | 35°00'23.1" N 126°22'57.8" E |
| D4 MUN | BRG 7.10°/4.00 NM MUN | 35°02'12.9" N 126°22'57.0" E |
| GOBUN | BRG 298.15°/12.00 NM MUN | 35°07'46.6" N 126°14'09.0" E |

Change : Bearing information.

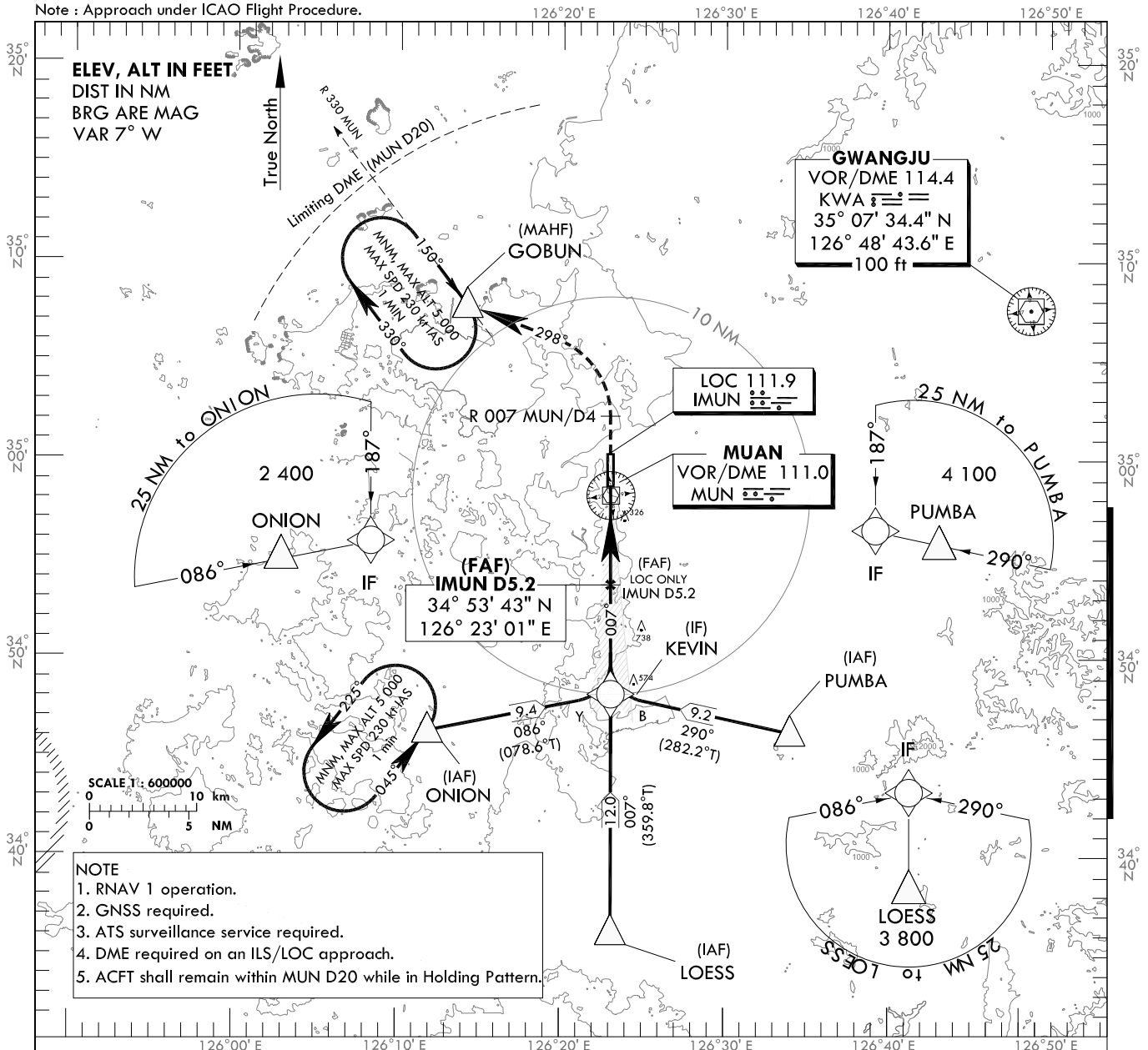
**INSTRUMENT
APPROACH
CHART - ICAO**

AERODROME ELEV 51 ft
HEIGHTS RELATED TO
THR RWY 01 - ELEV 32 ft

| | |
|-------------|--------|
| GWANGJU APP | 130.0 |
| | 228.9 |
| MUAN TWR | 118.25 |
| | 118.85 |

MUAN/Muan Intl(RKJB)
ILS or LOC Z RWY 01

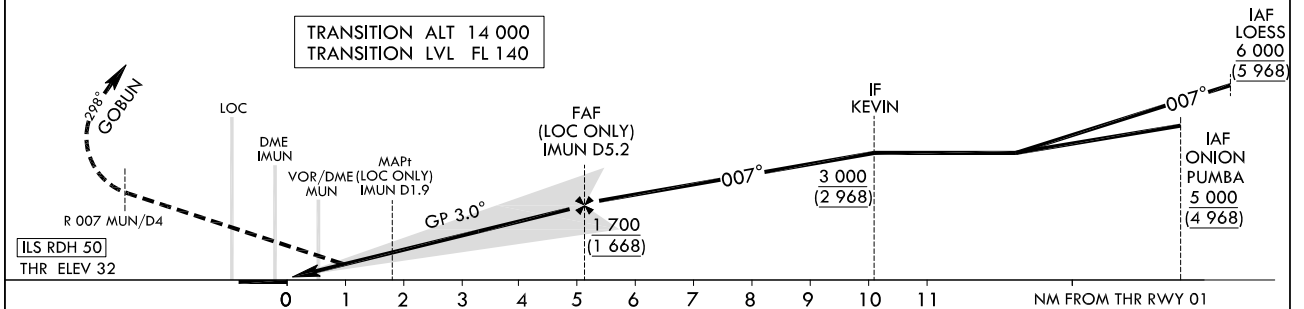
Note : Approach under ICAO Flight Procedure.



| RECOMMENDED PROFILE(LOC ONLY) | DME IMUN | 5 | 4 | 3 | 2 |
|--|----------|------------------|------------------|--------------|--------------|
| Final Approach Gradient 5.31%, 323 ft/NM | ALT(HGT) | 1 645 (1 613) | 1 322 (1 290) | 999 (967) | 660 (628) |

MISSED APPROACH

Climb on R 007 MUN/D4, then turn left heading 298° to GOBUN and Hold at 5 000 ft.



| CATEGORY | DA(DH)/MDA(MDH) | A | B | C | D | Knots | 60 | 90 | 120 | 150 | 180 | | |
|----------|-----------------|----------------------|----------------------|---------|---------|-------|--|---------|-----|-----|-----|-----|-----|
| | | RVR 550 m, VIS 800 m | 1 200 m | 2 600 m | 3 300 m | | | | | | | | |
| STA | CAT-I | FULL | RVR 550 m, VIS 800 m | | | | Rate of descent | V/V fpm | 318 | 478 | 637 | 796 | 955 |
| | | ALS INOP | 1 200 m | | | | | | | | | | |
| STA | LOC | FULL | 2 600 m | | | | * Timing Not authorized for defining MAPt. * Circling Not authorized. | | | | | | |
| | | ALS INOP | 3 300 m | | | | | | | | | | |

Change : Information of radial and obstacle height.

MUAN/Muan Intl(RKJB)
ILS or LOC Z RWY 01

AERONAUTICAL DATA TABULATION

| ILS/LOC Approach to RWY 01 form ONION, LOESS or PUMBA | | |
|---|--------------------------|--------------------------------|
| Fix/point | | Coordinates |
| ONION(IAF) | | 34°46'19.7" N 126°11'50.8" E |
| LOESS(IAF) | | 34°36'10.5" N 126°23'06.3" E |
| PUMBA(IAF) | | 34°46'14.4" N 126°34'00.9" E |
| KEVIN(IF) | BRG 7.10°/10.69 NM IMUN | 34°48' 10.9" N 126°23'03.3" E |
| D5.2 IMUN(FAP) | BRG 7.10°/5.17 NM IMUN | 34°53'42.6" N 126°23'00.5" E |
| D1.9 IMUN(MAP† LOC ONLY) | BRG 7.10°/1.90 NM IMUN | 34°56'59.1" N 126°22'59.2" E |
| MUN VOR/DME | | 34°58'12.7" N 126°23'00.0" E |
| THR RWY01 | | 34°58'43.64" N 126°22'58.45" E |
| IMUN DME | | 34°58'53.2" N 126°22'53.8" E |
| IMUN LOC | | 35°00'23.1" N 126°22'57.8" E |
| D4 MUN | BRG 7.10°/4.00 NM MUN | 35°02'12.9" N 126°22'57.0" E |
| GOBUN | BRG 298.15°/12.00 NM MUN | 35°07'46.6" N 126°14'09.0" E |

Change : Bearing information.

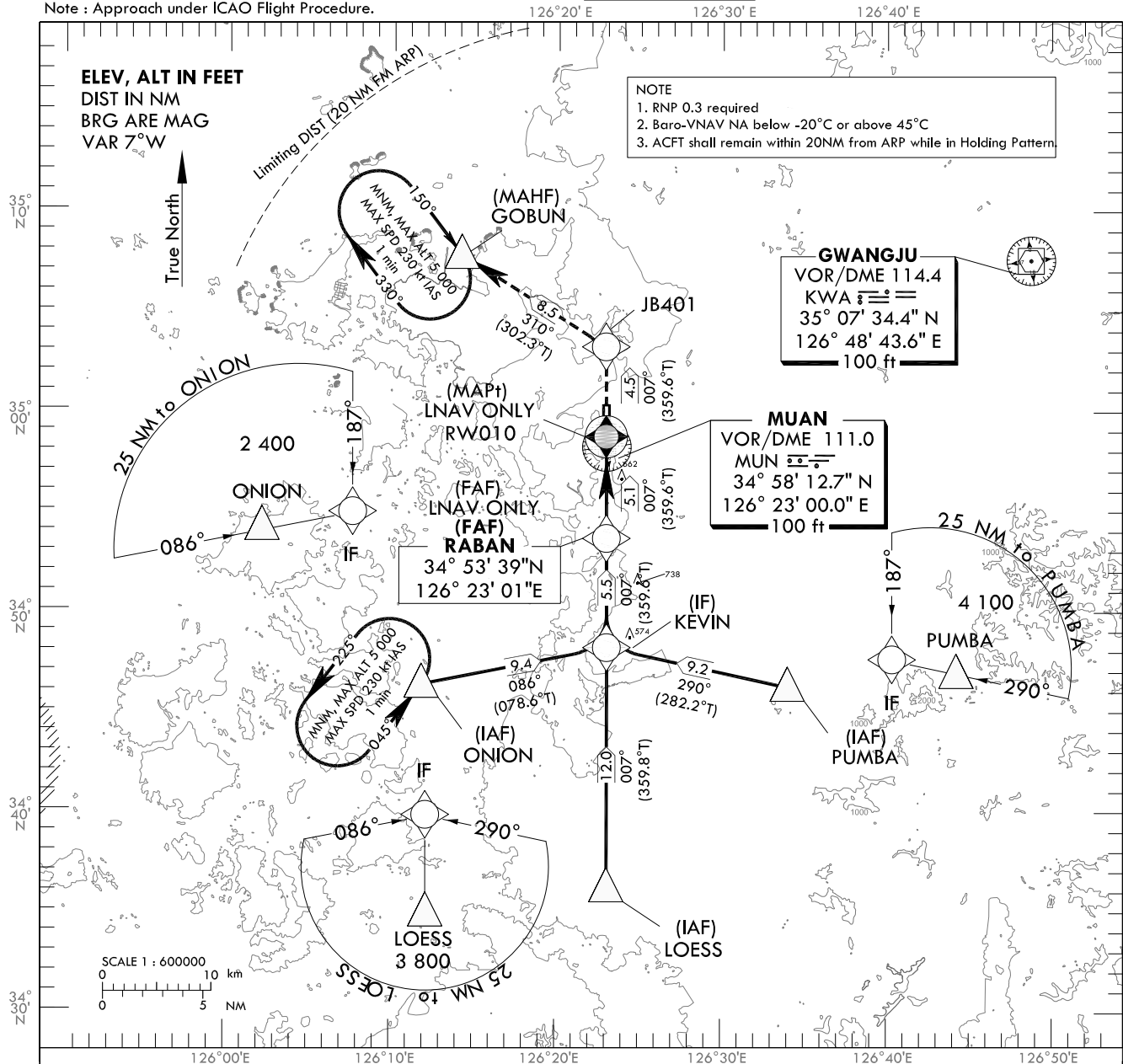
**INSTRUMENT
APPROACH
CHART - ICAO**

AERODROME ELEV 51 ft
HEIGHTS RELATED TO
THR RWY 01 - ELEV 32 ft

| | |
|-------------|--------|
| GWANGJU APP | 130.0 |
| | 228.9 |
| MUAN TWR | 118.25 |
| | 118.85 |

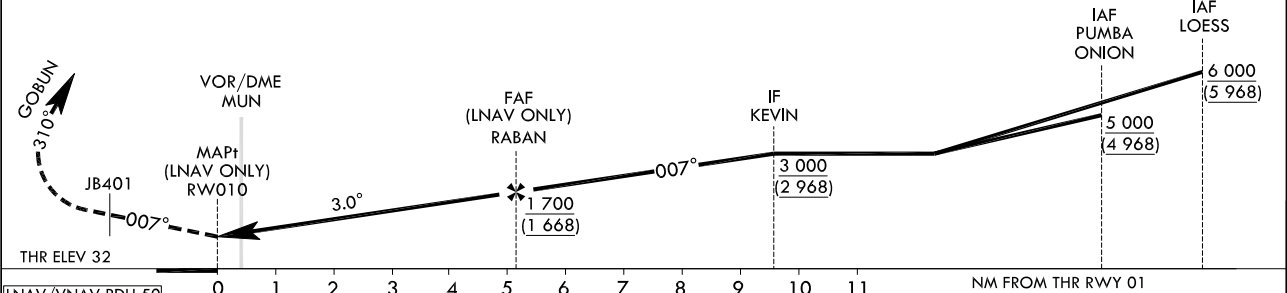
MUAN/Muan Intl(RKJB)
RNAV(GNSS) RWY 01

Note : Approach under ICAO Flight Procedure.



TRANSITION ALT 14 000
TRANSITION LVL FL 140

MISSED APPROACH
Climb to 5 000 ft on track of 007° to JB401,
then LEFT turn on track of 310° to GOBUN.



| CATEGORY | DA(H)/MDA(H) | A | B | C | D | Rate of descent | Knots | | | | | |
|----------|--------------|----------|---------|---------|---|--|---------|-----|-----|-----|-----|-----|
| | | | | | | | 60 | 90 | 120 | 150 | 180 | |
| STA | LNNAV/VNAV | FULL | 790 | 2 700 m | | | V/V fpm | 319 | 478 | 638 | 797 | 957 |
| | | ALS INOP | (758) | 3 500 m | | | | | | | | |
| LNNAV | FULL | 850 | 3 100 m | | | * Timing Not authorized for defining MAPt. * Circling Not authorized. | | | | | | |
| | ALS INOP | (818) | 3 800 m | | | | | | | | | |

Change : Information of NOTE, Radial, obstacle height and Missed approach.

MUAN/Muan Intl(RKJB)
RNAV(GNSS) RWY 01
HOLDING PROCEDURE

AERONAUTICAL DATA TABULATION

Instrument Approach Procedure Coding Tables

RNAV(GNSS) RWY 01 - via ONION to KEVIN(IF)

| Serial Number | Path Descriptor | Waypoint Identifier | Fly-over | Course/Track °M(T) | Distance (NM) | Turn direction | Altitude (ft) | Speed (kt) | Coordinates | VPA/RDH | Navigation specification | Remarks |
|---------------|-----------------|---------------------|----------|--------------------|---------------|----------------|---------------|------------|-----------------------|---------|--------------------------|---------|
| 001 | IF | ONION | - | - | - | - | +5 000 | - | 3446 19.7N 1261150.8E | - | RNP APCH | IAF |
| 002 | TF | KEVIN | - | 086(078.6) | 9.4 | - | +3 000 | - | 3448 10.9N 1262303.3E | - | RNP APCH | IF |

RNAV(GNSS) RWY 01 - via LOESS to KEVIN(IF)

| Serial Number | Path Descriptor | Waypoint Identifier | Fly-over | Course/Track °M(T) | Distance (NM) | Turn direction | Altitude (ft) | Speed (kt) | Coordinates | VPA/RDH | Navigation specification | Remarks |
|---------------|-----------------|---------------------|----------|--------------------|---------------|----------------|---------------|------------|-----------------------|---------|--------------------------|---------|
| 001 | IF | LOESS | - | - | - | - | +6 000 | - | 3436 10.5N 1262306.3E | - | RNP APCH | IAF |
| 002 | TF | KEVIN | - | 007(359.8) | 12.0 | - | +3 000 | - | 3448 10.9N 1262303.3E | - | RNP APCH | IF |

RNAV(GNSS) RWY 01 - via PUMBA to KEVIN(IF)

| Serial Number | Path Descriptor | Waypoint Identifier | Fly-over | Course/Track °M(T) | Distance (NM) | Turn direction | Altitude (ft) | Speed (kt) | Coordinates | VPA/RDH | Navigation specification | Remarks |
|---------------|-----------------|---------------------|----------|--------------------|---------------|----------------|---------------|------------|-----------------------|---------|--------------------------|---------|
| 001 | IF | PUMBA | - | - | - | - | +5 000 | - | 3446 14.4N 1263400.9E | - | RNP APCH | IAF |
| 002 | TF | KEVIN | - | 290(282.2) | 9.2 | - | +3 000 | - | 3448 10.9N 1262303.3E | - | RNP APCH | IF |

RNAV(GNSS) RWY 01 - via KEVIN(IF) to GOBUN(MAHF)

| Serial Number | Path Descriptor | Waypoint Identifier | Fly-over | Course/Track °M(T) | Distance (NM) | Turn direction | Altitude (ft) | Speed (kt) | Coordinates | VPA/RDH | Navigation specification | Remarks |
|---------------|-----------------|---------------------|----------|--------------------|---------------|----------------|---------------|------------|-----------------------|----------|--------------------------|--------------------------|
| 002 | TF | KEVIN | - | - | - | - | +3 000 | - | 3448 10.9N 1262303.3E | - | RNP APCH | IF |
| 003 | TF | RABAN | - | 007(359.6) | 5.5 | - | +1 700 | - | 345338.8N 1262300.8E | - | RNP APCH | FAF |
| 004 | TF | RW010 | Y | 007(359.6) | 5.1 | - | +850 | - | 345843.6N 1262258.5E | -3.00/50 | RNP APCH | MAPt |
| 005 | TF | JB401 | - | 007(359.6) | 4.5 | - | - | - | 350313.1N 1262256.4E | - | RNP APCH | - |
| 006 | TF | GOBUN | Y | 310(302.3) | 8.5 | - | - | - | 350746.6N 1261409.0E | - | RNP APCH | - |
| 007 | HM | GOBUN | Y | 150(142.8) | - | R | @5 000 | -230 | 350746.6N 1261409.0E | - | RNP APCH | min (Outbound timing) |

HOLDING PROCEDURE

| Holding Identification | Path Descriptor | Waypoint Identifier | Fly-over | Course/Track °M(T) | Time (min) | Turn direction | Altitude (ft) | Speed (kt) | Coordinates | VPA/RDH | Navigation specification | Remarks |
|------------------------|-----------------|---------------------|----------|--------------------|------------|----------------|---------------|------------|-----------------------|---------|--------------------------|---------|
| RNAV(GNSS) RWY 01 | HM | ONION | Y | 045 (037.7) | 1 | L | @5 000 | -230 | 3446 19.7N 1261150.8E | - | RNAV 1 | - |

Change : Information of Course/Track.

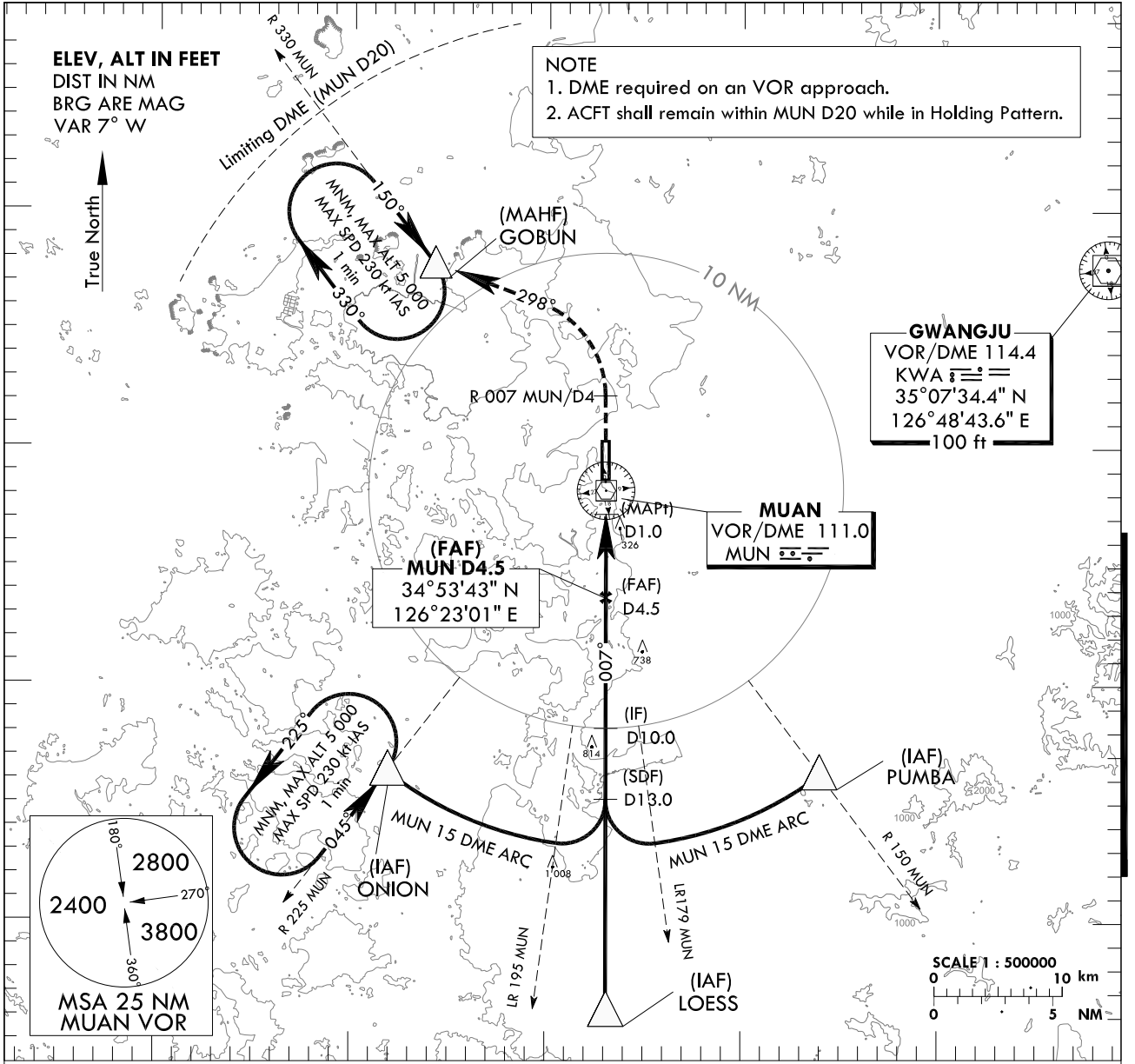
**INSTRUMENT
APPROACH
CHART - ICAO**

AERODROME ELEV 51 ft
HEIGHTS RELATED TO
THR RWY 01 - ELEV 32 ft

| | |
|-------------|--------|
| GWANGJU APP | 130.0 |
| | 228.9 |
| MUAN TWR | 118.25 |
| | 118.85 |

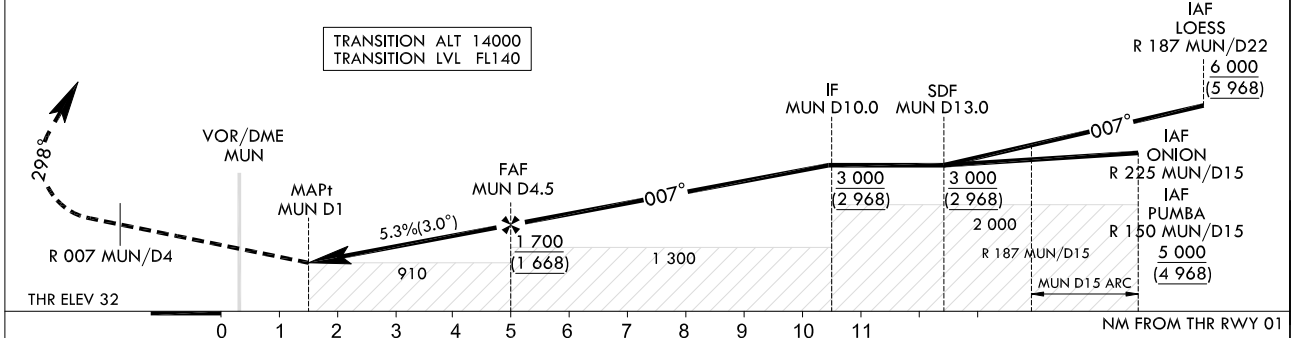
MUAN/Muan Intl(RKJB)
VOR RWY 01

Note : Approach under ICAO Flight Procedure.



| RECOMMENDED PROFILE | DME MUN | 4 | 3 | 2.1 |
|--|----------|------------------|------------------|--------------|
| Final Approach Gradient 5.32%, 323 ft/NM | ALT(HGT) | 1 540 (1 508) | 1 217 (1 185) | 910 (878) |

MISSED APPROACH
Climb on R 007 MUN/D4, then turn left HDG 298° to GOBUN and Hold at 5 000 ft.



| CATEGORY | MDA/(MDH) | A | B | C | D | Knots | | | | | | | |
|----------|-----------|--------------|---------|---|---|-------|-----------------|---------|--|-----|-----|-----|-----|
| | | | | | | 60 | 90 | 120 | 150 | 180 | | | |
| STA | FULL | 910 (878) | 3 300 m | | | | Rate of descent | V/V fpm | 323 | 484 | 646 | 807 | 968 |
| | ALS INOP | | 4 000 m | | | | | | * Circling Not authorized. * Timing Not authorized for defining the MAPt. | | | | |

Change : Information of obstacle height.

MUAN/Muan Intl(RKJB)
VOR RWY 01

AERONAUTICAL DATA TABULATION

| VOR Approach to RWY 01 form ONION, LOESS or PUMBA | | |
|---|--------------------------|--------------------------------|
| Fix/point | | Coordinates |
| ONION(IAF) | R 225 MUN /15.00 NM MUN | 34°46'19.7" N 126°11'50.8" E |
| LOESS(IAF) | R 187 MUN /22.00 NM MUN | 34°36'10.5" N 126°23'06.3" E |
| PUMBA(IAF) | R 150 MUN /15.00 NM MUN | 34°46'14.4" N 126°34'00.9" E |
| D13 MUN(SDF) | BRG 7.31°/13.00 NM MUN | 34°45' 11.5" N 126°23'03.7" E |
| D10 MUN(IF) | BRG 7.31°/10.0 NM MUN | 34°48' 10.9" N 126°23'03.3" E |
| D4.5 MUN(FAF) | BRG 7.31°/4.50 NM MUN | 34°53'42.6" N 126°23'00.5" E |
| D1 MUN(MAPt) | BRG 7.31°/1.00 NM MUN | 34°57'12.6" N 126°23'00.3" E |
| MUN VOR/DME | | 34°58'12.7" N 126°23'00.0" E |
| THR RWY01 | | 34°58'43.64" N 126°22'58.45" E |
| D4 MUN | BRG 7.31°/4.00 NM MUN | 35°02'12.9" N 126°22'57.0" E |
| GOBUN | BRG 298.35°/12.00 NM MUN | 35°07'46.6" N 126°14'09.0" E |

Change : Bearing information.

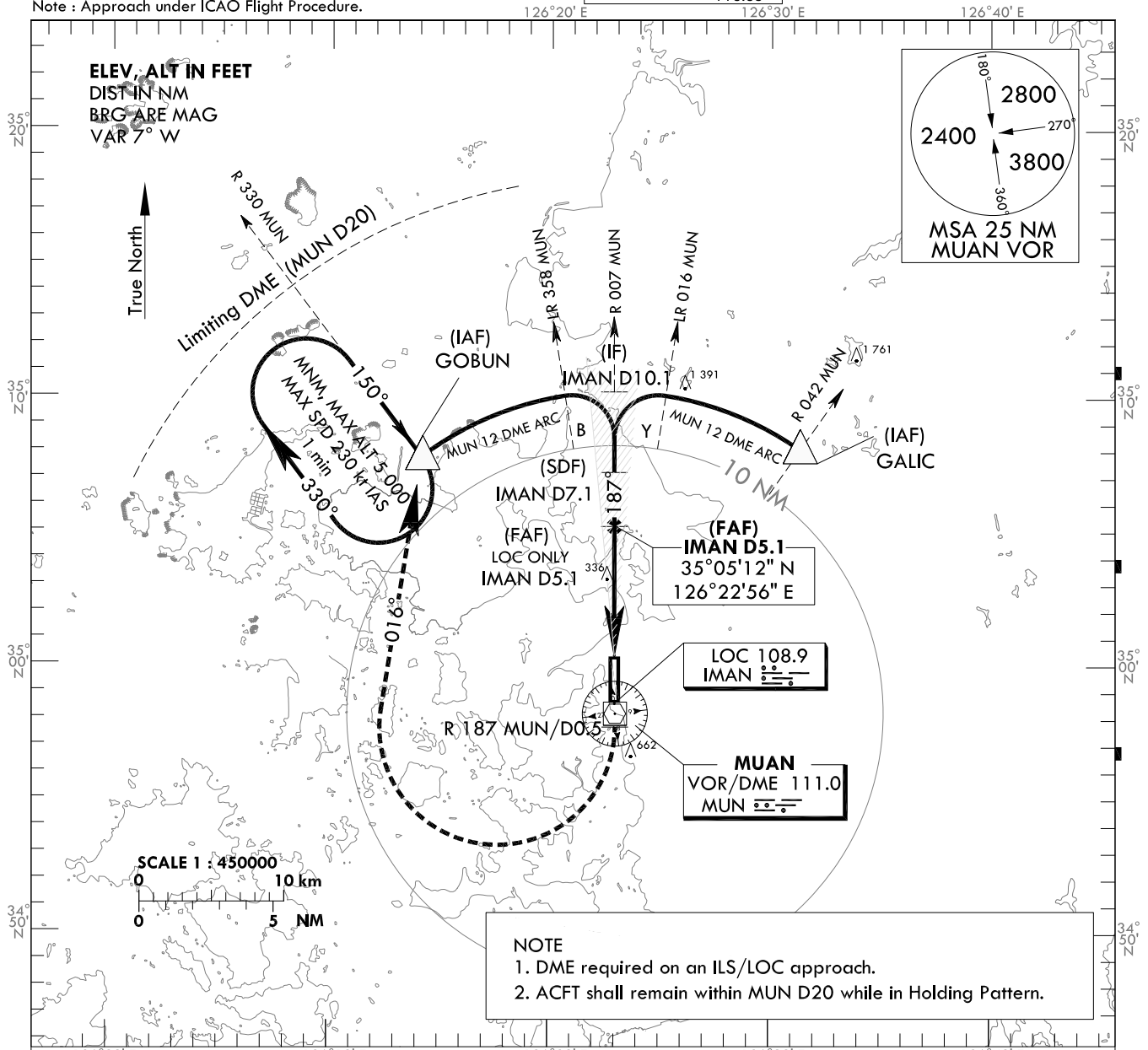
**INSTRUMENT
APPROACH
CHART - ICAO**

AERODROME ELEV 51 ft
HEIGHTS RELATED TO
THR RWY 19 - ELEV 51 ft

| | |
|-------------|--------|
| GWANGJU APP | 130.0 |
| MUAN TWR | 118.25 |
| | 118.85 |

MUAN/Muan Intl(RKJB)
ILS or LOC Y RWY 19

Note : Approach under ICAO Flight Procedure.

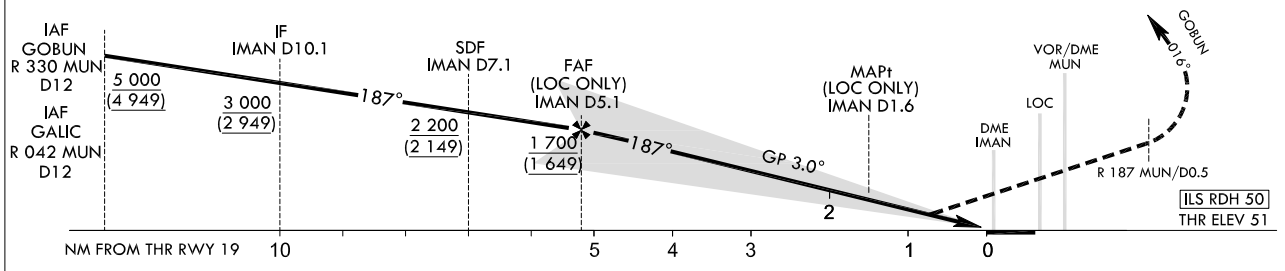


NOTE
1. DME required on an ILS/LOC approach.
2. ACFT shall remain within MUN D20 while in Holding Pattern.

| RECOMMENDED PROFILE(LOC ONLY) | DME IMAN | 5 | 4 | 3 | 2 | 1.7 |
|--|----------|------------------|------------------|----------------|--------------|--------------|
| Final Approach Gradient 5.31%, 323 ft/NM | ALT(HGT) | 1 660 (1 609) | 1 338 (1 287) | 1 015 (964) | 692 (641) | 590 (539) |

MISSED APPROACH
Climb on R 187 MUN/D0.5, then turn right HDG 016° to GOBUN and Hold at 5 000 ft.

TRANSITION ALT 14 000
TRANSITION LVL FL 140



| CATEGORY | DA(DH)/MDA(MDH) | A | | | | B | | | | C | | | | D | | | |
|----------|--------------------|----------|-------|---|---------|---|---------|---|----------------------|---|---------|---|---------|---|---------|---|--|
| | | A | | B | | A | | B | | A | | B | | A | | B | |
| STA | CAT-I (CG 2.5%) | FULL | 414 | | 1 200 m | | 1 900 m | | RVR 550 m, VIS 800 m | | 1 200 m | | 2 000 m | | 2 700 m | | |
| | | ALS INOP | (363) | | | | | | | | | | | | | | |
| | CAT-I (CG 5.0%) | FULL | 251 | | | | | | | | | | | | | | |
| | | ALS INOP | (200) | | | | | | | | | | | | | | |
| LOC | FULL | 590 | | | | | | | | | | | | | | | |
| | ALS INOP | (539) | | | | | | | | | | | | | | | |

| Rate of descent | V/V fpm | Knots | | | | |
|-----------------|---------|-------|-----|-----|-----|-----|
| | | 60 | 90 | 120 | 150 | 180 |
| | | 318 | 478 | 637 | 796 | 955 |

* Timing Not authorized for defining MAPt.
* Circling Not authorized.

Change : Information of obstacle height.

MUAN/Muan Intl(RKJB)
ILS or LOC Y RWY 19

AERONAUTICAL DATA TABULATION

| ILS/LOC Approach to RWY 19 form GOBUN or GALIC | | |
|--|---------------------------|--------------------------------|
| Fix/point | | Coordinates |
| GOBUN(IAF) | R 330 MUN /12.00 NM MUN | 35°07'46.6" N 126°14'09.0" E |
| GALIC(IAF) | R 042 MUN /12.00 NM MUN | 35°08'04.8" N 126°31'20.7" E |
| D10.1 IMAN(IF) | BRG 187.14°/10.14 NM IMAN | 35°10'13.8" N 126°22'53.6" E |
| D7.1 IMAN(SDF) | BRG 187.14°/7.14 NM IMAN | 35°07'13.4" N 126°22'54.7" E |
| D5.1 IMAN(FAP) | BRG 187.14°/5.12 NM IMAN | 35°05'12.3" N 126°22'55.7" E |
| D1.6 IMAN(MAP† LOC ONLY) | BRG 187.14°/1.60 NM IMAN | 35°01'40.5" N 126°22'57.2" E |
| THR RWY19 | | 35°00'14.49" N 126°22'57.82" E |
| IMAN DME | | 35°00'04.3" N 126°22'53.3" E |
| IMAN LOC | | 34°58'35.0" N 126°22'58.5" E |
| MUN VOR/DME | | 34°58'12.7" N 126°23'00.0" E |
| D0.5 MUN | BRG 187.14°/0.50 NM MUN | 34°57'42.7" N 126°23'00.2" E |
| GOBUN | BRG 016.40°/12.00 NM MUN | 35°07'46.6" N 126°14'09.0" E |

Change : Bearing information.

**INSTRUMENT
APPROACH
CHART - ICAO**

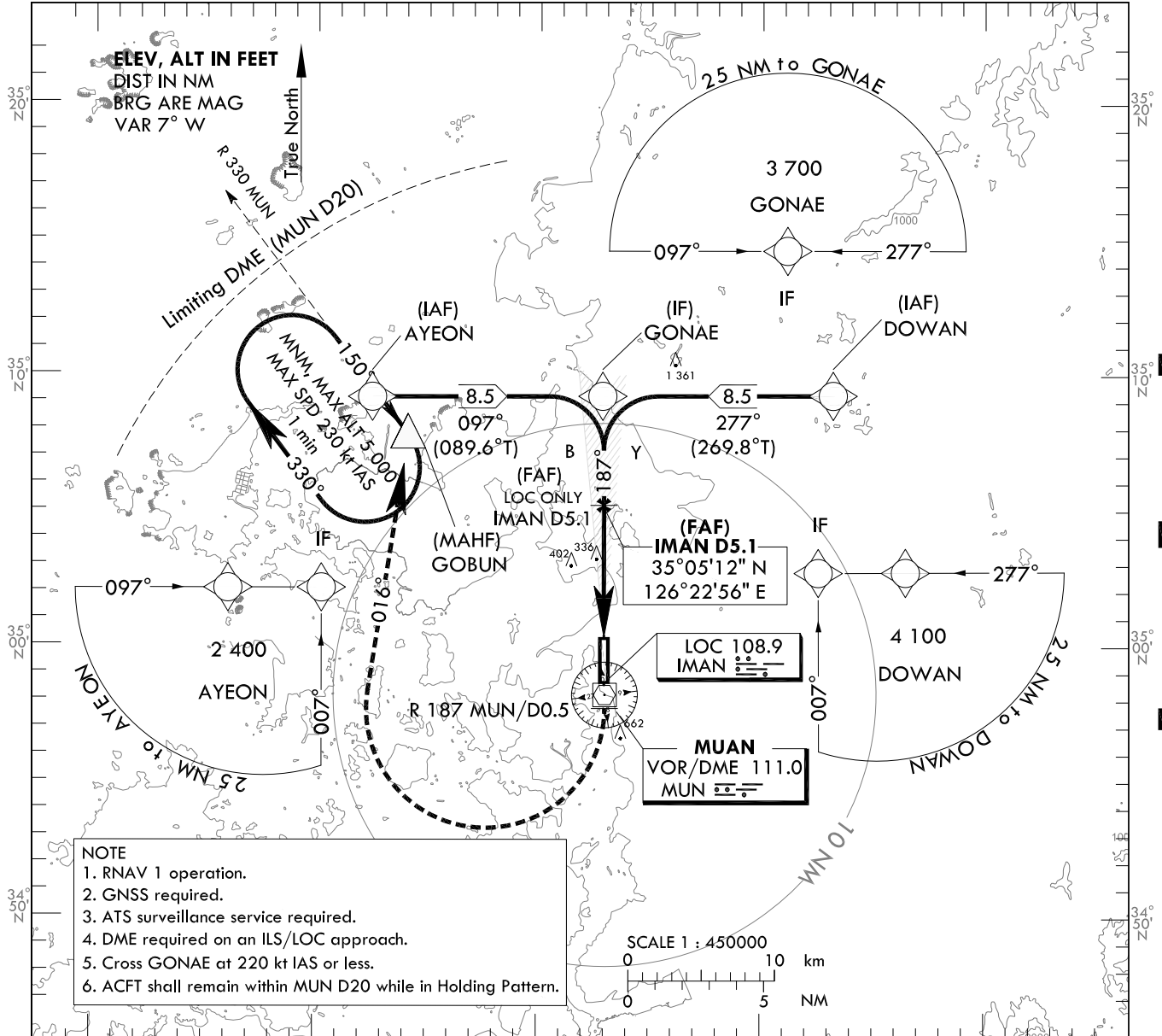
AERODROME ELEV 51 ft
HEIGHTS RELATED TO
THR RWY 19 - ELEV 51 ft

| | |
|-------------|--------|
| GWANGJU APP | 130.0 |
| | 228.9 |
| MUAN TWR | 118.25 |
| | 118.85 |

MUAN/Muan Intl(RKJB)
ILS or LOC Z RWY 19

Note : Approach under ICAO Flight Procedure.

126°20' E 126°30' E 126°40' E

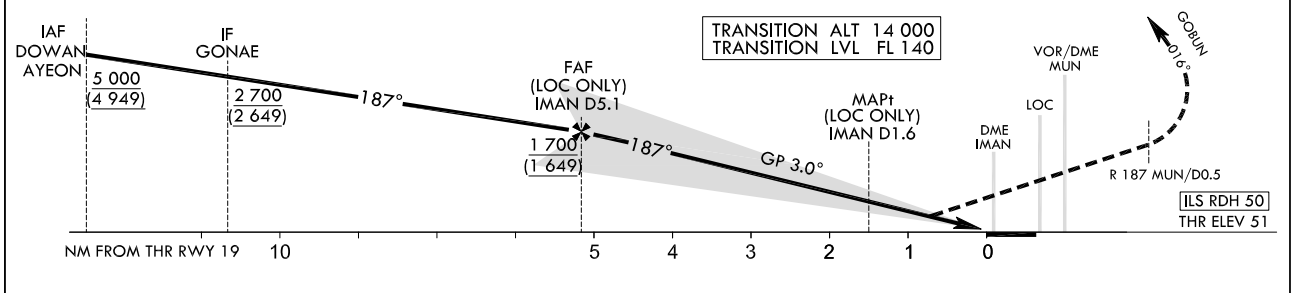


126°00' E 126°10' E 126°20' E 126°30' E 126°40' E

| RECOMMENDED PROFILE(LOC ONLY) | DME IMAN | 5 | 4 | 3 | 2 | 1.7 |
|--|----------|------------------|------------------|----------------|--------------|--------------|
| Final Approach Gradient 5.31%, 323 ft/NM | ALT(HGT) | 1 660 (1 609) | 1 338 (1 287) | 1 015 (964) | 692 (641) | 590 (539) |

MISSED APPROACH

Climb on R 187 MUN/D0.5, then turn right heading 016° to GOBUN and Hold at 5 000 ft.



| CATEGORY | DA(DH)/MDA(MDH) | A B C D | | | | Rate of descent |
|----------|----------------------|-----------|----------------------|---|---|--|
| | | A | B | C | D | |
| STA | CAT-I FULL (CG 2.5%) | 414 (363) | 1 200 m | | | Knots 60 90 120 150 180 |
| | | | 1 900 m | | | |
| | CAT-I FULL (CG 5.0%) | 251 (200) | RVR 550 m, VIS 800 m | | | V/V fpm 318 478 637 796 955 |
| | | | 1 200 m | | | |
| LOC | FULL | 590 (539) | 2 000 m | | | * Timing Not authorized for defining MAPt. * Circling Not authorized. |
| | ALS INOP | | 2 700 m | | | |

Change : Information of obstacle height.

MUAN/Muan Intl(RKJB)
ILS or LOC Z RWY 19

AERONAUTICAL DATA TABULATION

| ILS/LOC Approach to RWY 19 form AYEON or DOWAN | | |
|--|--------------------------|--------------------------------|
| Fix/point | | Coordinates |
| AYEON(IAF) | | 35°09'10.2" N 126°12'32.1" E |
| DOWAN(IAF) | | 35°09'16.1" N 126°33'16.0" E |
| GONAE(IF) | | 35°09'13.6" N 126°22'54.0" E |
| D5.1 IMAN(FAP) | BRG 187.14°/5.12 NM IMAN | 35°05'12.3" N 126°22'55.7" E |
| D1.6 IMAN(MAP+ LOC ONLY) | BRG 187.14°/1.60 NM IMAN | 35°01'40.5" N 126°22'57.2" E |
| THR RWY19 | | 35°00'14.49" N 126°22'57.82" E |
| IMAN DME | | 35°00'04.3" N 126°22'53.3" E |
| IMAN LOC | | 34°58'35.0" N 126°22'58.5" E |
| MUN VOR/DME | | 34°58'12.7" N 126°23'00.0" E |
| D0.5 MUN | BRG 187.14°/0.50 NM MUN | 34°57'42.7" N 126°23'00.2" E |
| GOBUN | BRG 016.40°/12.00 NM MUN | 35°07'46.6" N 126°14'09.0" E |

Change : Bearing information.

INSTRUMENT APPROACH CHART - ICAO

AERODROME ELEV 51 ft
HEIGHTS RELATED TO
THR RWY 19 - ELEV 51 ft

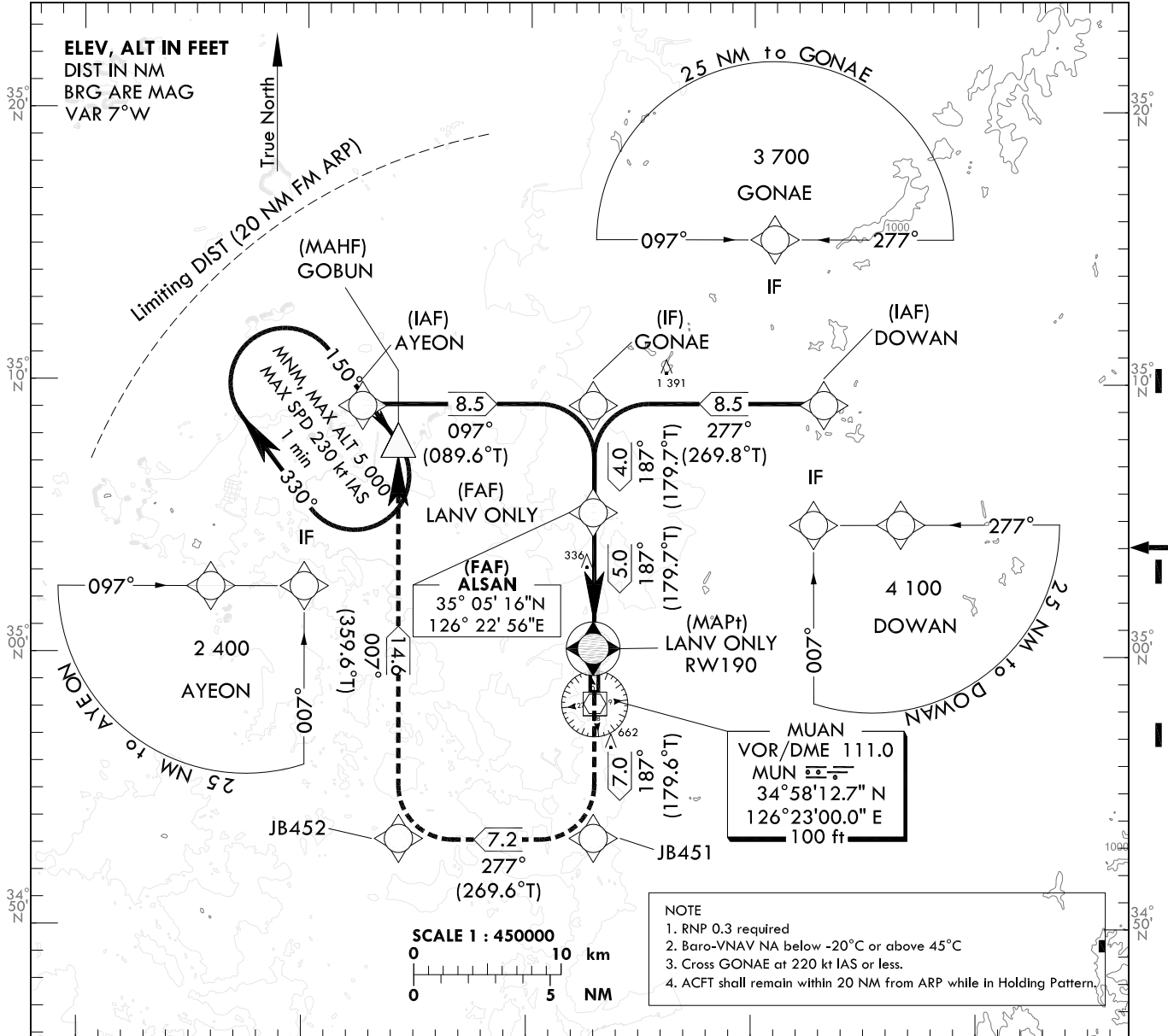
| | |
|-------------|--------|
| GWANGJU APP | 130.0 |
| | 228.9 |
| MUAN TWR | 118.25 |
| | 118.85 |

MUAN/Muan Intl(RKJB)
RNAV(GNSS) RWY 19

Note : Approach under ICAO Flight Procedure.

126°20' E

126°40' E



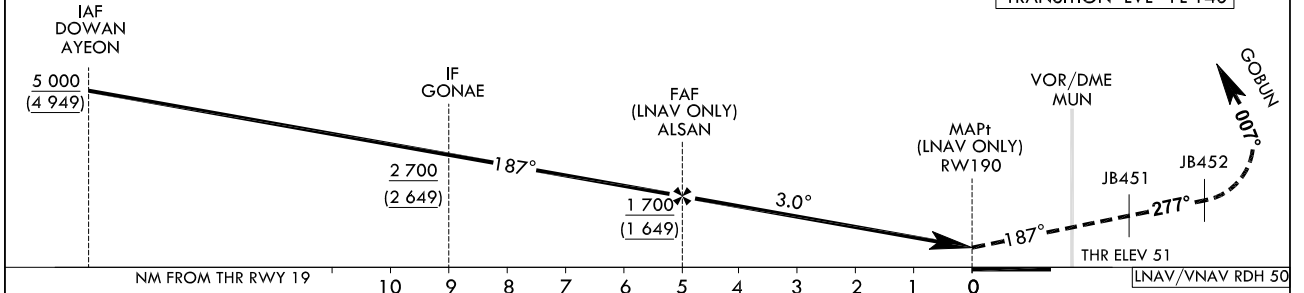
- NOTE**
1. RNP 0.3 required
 2. Baro-VNAV NA below -20°C or above 45°C
 3. Cross GONAE at 220 kt IAS or less.
 4. ACFT shall remain within 20 NM from ARP while in Holding Pattern.

MISSED APPROACH

Climb to 5 000 ft on track of 187° to JB451, RIGHT turn on track of 277° to JB452, Then RIGHT turn on track of 007° to GOBUN.

* Missed approach turns are limited to maximum of 230 kt IAS.

TRANSITION ALT 14 000
TRANSITION LVL FL 140



| CATEGORY | | DA(H)/MDA(H) | A | B | C | D | Knots | | | | | | | |
|----------|-----------|--------------|--------------|---------|---|---|-------|--|---------|-----|-----|-----|-----|-----|
| STA | LNAV/VNAV | FULL | 460 (409) | 1 200 m | | | | Rate of descent | V/V fpm | 319 | 478 | 637 | 797 | 957 |
| | | ALS INOP | 1 900 m | | | | | | | | | | | |
| | LNAV | FULL | 590 (539) | 1 700 m | | | | * Timing Not authorized for defining MAPt. * Circling Not authorized. | | | | | | |
| | | ALS INOP | 2 400 m | | | | | | | | | | | |

Change : Information of obstacle height, NOTE and LNAV/VNAV WX minima.

MUAN/Muan Intl(RKJB)
RNAV(GNSS) RWY 19

AERONAUTICAL DATA TABULATION

Instrument Approach Procedure Coding Tables

RNAV(GNSS) RWY 19 - via DOWAN to GONAE(IF)

| Serial Number | Path Descriptor | Waypoint Identifier | Fly-over | Course/Track over | Distance (NM) | Turn direction | Altitude (ft) | Speed (kt) | Coordinates | VPA/RDH | Navigation specification | Remarks |
|---------------|-----------------|---------------------|----------|-------------------|---------------|----------------|---------------|------------|----------------------|---------|--------------------------|---------|
| 001 | IF | DOWAN | - | - | - | - | +5 000 | - | 350916.1N 1263316.0E | - | RNP APCH | IAF |
| 002 | TF | GONAE | - | 277(269.8) | 8.5 | - | +2 700 | -220 | 350913.6N 1262254.0E | - | RNP APCH | IF |

RNAV(GNSS) RWY 19 - via AYEON to GONAE(IF)

| Serial Number | Path Descriptor | Waypoint Identifier | Fly-over | Course/Track over | Distance (NM) | Turn direction | Altitude (ft) | Speed (kt) | Coordinates | VPA/RDH | Navigation specification | Remarks |
|---------------|-----------------|---------------------|----------|-------------------|---------------|----------------|---------------|------------|----------------------|---------|--------------------------|---------|
| 001 | IF | AYEON | - | - | - | - | +5 000 | - | 350910.2N 1261232.1E | - | RNP APCH | IAF |
| 002 | TF | GONAE | - | 097(089.6) | 8.5 | - | +2 700 | -220 | 350913.6N 1262254.0E | - | RNP APCH | IF |

RNAV(GNSS) RWY 19 - via GONAE(IF) to GOBUN(MAHF)

| Serial Number | Path Descriptor | Waypoint Identifier | Fly-over | Course/Track over | Distance (NM) | Turn direction | Altitude (ft) | Speed (kt) | Coordinates | VPA/RDH | Navigation specification | Remarks |
|---------------|-----------------|---------------------|----------|-------------------|---------------|----------------|---------------|------------|----------------------|----------|--------------------------|----------------------------|
| 002 | TF | GONAE | - | - | - | - | +2 700 | -220 | 350913.6N 1262254.0E | - | RNP APCH | IF |
| 003 | TF | ALSAN | - | 187(179.7) | 4.0 | - | +1 700 | - | 350515.9N 1262255.7E | - | RNP APCH | FAF |
| 004 | TF | RW190 | Y | 187(179.7) | 5.0 | - | +590 | - | 350014.5N 1262257.8E | -3.00/50 | RNP APCH | MAPt |
| 005 | TF | JB451 | - | 187(179.6) | 7.0 | - | - | -230 | 345313.8N 1262301.0E | - | RNP APCH | - |
| 006 | TF | JB452 | - | 277(269.6) | 7.2 | - | - | -230 | 345310.9N 1261417.1E | - | RNP APCH | - |
| 007 | TF | GOBUN | Y | 007(359.6) | 14.6 | - | - | -230 | 350746.6N 1261409.0E | - | RNP APCH | - |
| 008 | HM | GOBUN | Y | 150(142.8) | - | R | @5 000 | -230 | 350746.6N 1261409.0E | - | RNP APCH | 1 min (Outbound timing) |

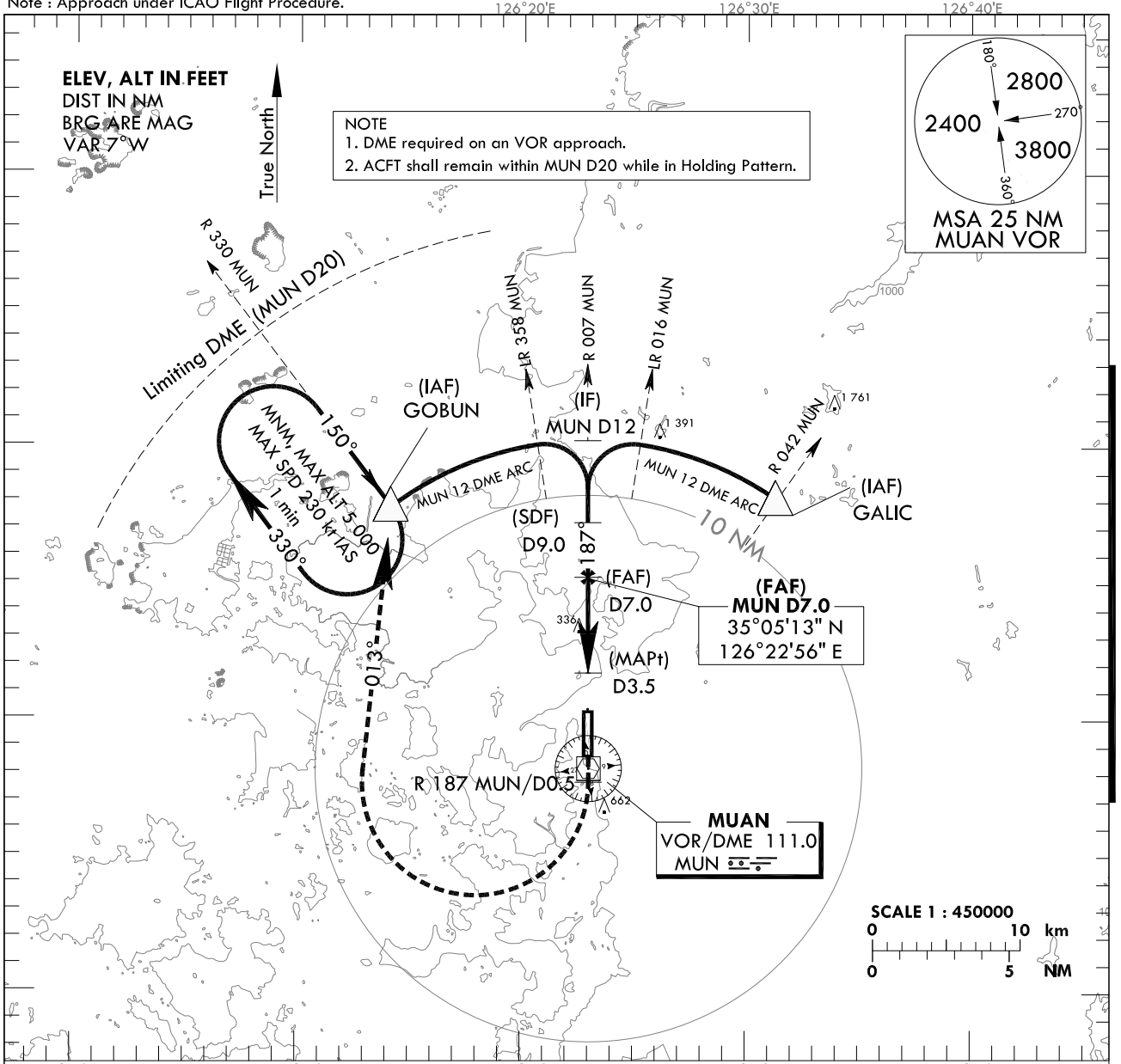
**INSTRUMENT
APPROACH
CHART - ICAO**

AERODROME ELEV 51 ft
HEIGHTS RELATED TO
THR RWY 19 - ELEV 51 ft

| | |
|-------------|--------|
| GWANGJU APP | 130.0 |
| | 228.9 |
| MUAN TWR | 118.25 |
| | 118.85 |

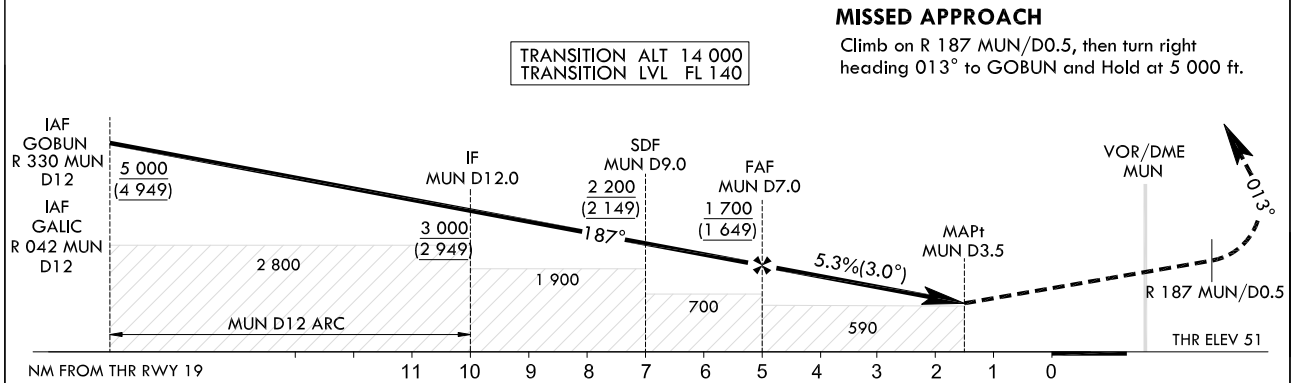
MUAN/Muan Intl(RKJB)
VOR RWY 19

Note : Approach under ICAO Flight Procedure.



126°00'E 126°10'E 126°20'E 126°30'E 126°40'E

| RECOMMENDED PROFILE | DME MUN | 6 | 5 | 4 | 3.6 |
|--|----------|------------------|------------------|--------------|--------------|
| Final Approach Gradient 5.32%, 323 ft/NM | ALT(HGT) | 1 379 (1 328) | 1 058 (1 007) | 736 (685) | 590 (539) |



| CATEGORY | MDA/(MDH) | A | B | C | D | Rate of descent | | | | |
|----------|-----------|---------|---|---|---|--|-----|-----|-----|-----|
| | | | | | | V/V fpm | 60 | 90 | 120 | 150 |
| STA FULL | 590 (539) | 2 100 m | | | | 322 | 483 | 644 | 804 | 965 |
| ALS INOP | | 2 800 m | | | | * Circling Not authorized. * Timing Not authorized for defining the MAPt. | | | | |

Change : Information of obstacle height.

MUAN/Muan Intl(RKJB)
VOR RWY 19

AERONAUTICAL DATA TABULATION

| VOR Approach to RWY 19 form GOBUN or GALIC | | | |
|--|--------------------------|----------------|-----------------|
| Fix/point | | Coordinates | |
| GOBUN(IAF) | R 330 MUN /12.00 NM MUN | 35°07'46.6" N | 126°14'09.0" E |
| GALIC(IAF) | R 042 MUN /12.00 NM MUN | 35°08'04.8" N | 126°31'20.7" E |
| D12 MUN(IF) | BRG 187.12°/12.00 NM MUN | 35°10'13.8" N | 126°22'53.6" E |
| D9 MUN(SDF) | BRG 187.12°/9.00 NM MUN | 35°07'13.5" N | 126°22'55.2" E |
| D7 MUN(FAF) | BRG 187.12°/7.00 NM MUN | 35°05'13.4" N | 126°22'56.3" E |
| D3.5 MUN(MAPt) | BRG 187.12°/3.50 NM MUN | 35°01'43.0" N | 126°22'58.2" E |
| THR RWY19 | | 35°00'14.49" N | 126°22'57.82" E |
| MUN VOR/DME | | 34°58'12.7" N | 126°23'00.0" E |
| D0.5 MUN | BRG 187.12°/0.50 NM MUN | 34°57'42.7" N | 126°23'00.2" E |
| GOBUN | BRG 013.43°/12.00 NM MUN | 35°07'46.6" N | 126°14'09.0" E |

Change : Information of Bearing and Coordinates.